

artech

art of technology

What is Industrial Panel Computer?
How should it be chosen?

Industrial Panel Computers

- Industrial Panel Computers are preferred to be used in factories, production facilities, **harsh** industrial environment conditions where personal computers cannot be sufficient, in

PROCESS ANALYSIS AND CONTROL

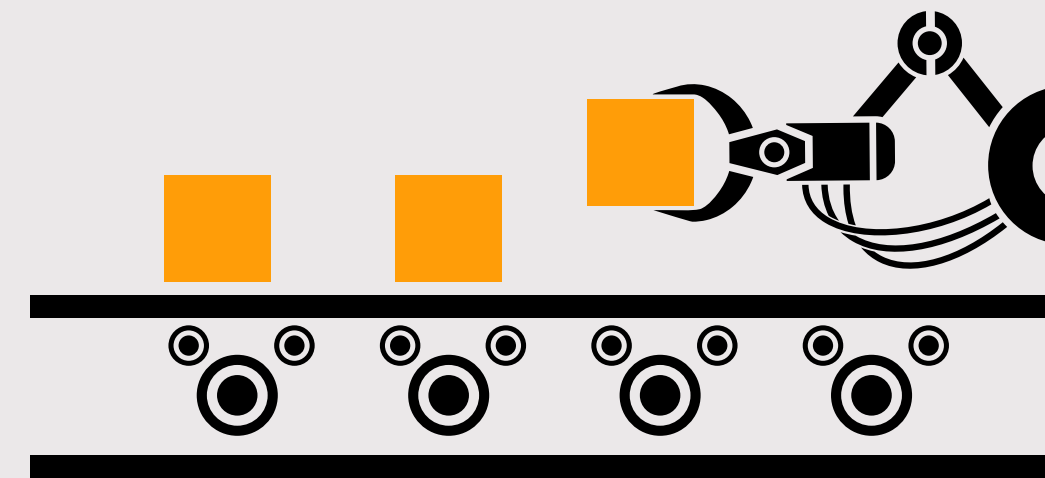
OPERATOR PANEL,

MACHINE AND PROCESS AUTOMATION,

PRODUCTION DATA COLLECTION

applications.

Production Data Collection



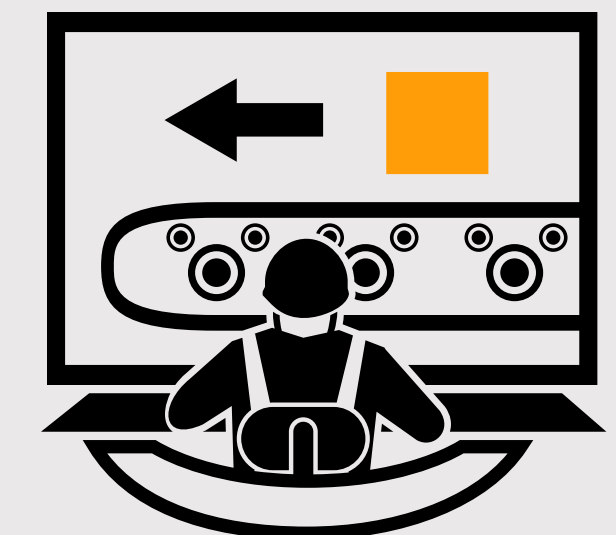
Process Analysis and Control



Machine and Process Automation



Operator Panel



**WHAT IS THE DIFFERENCE BETWEEN
INDUSTRIAL PANEL COMPUTER
&
PERSONAL COMPUTER?**



Unlike Personal Computers,

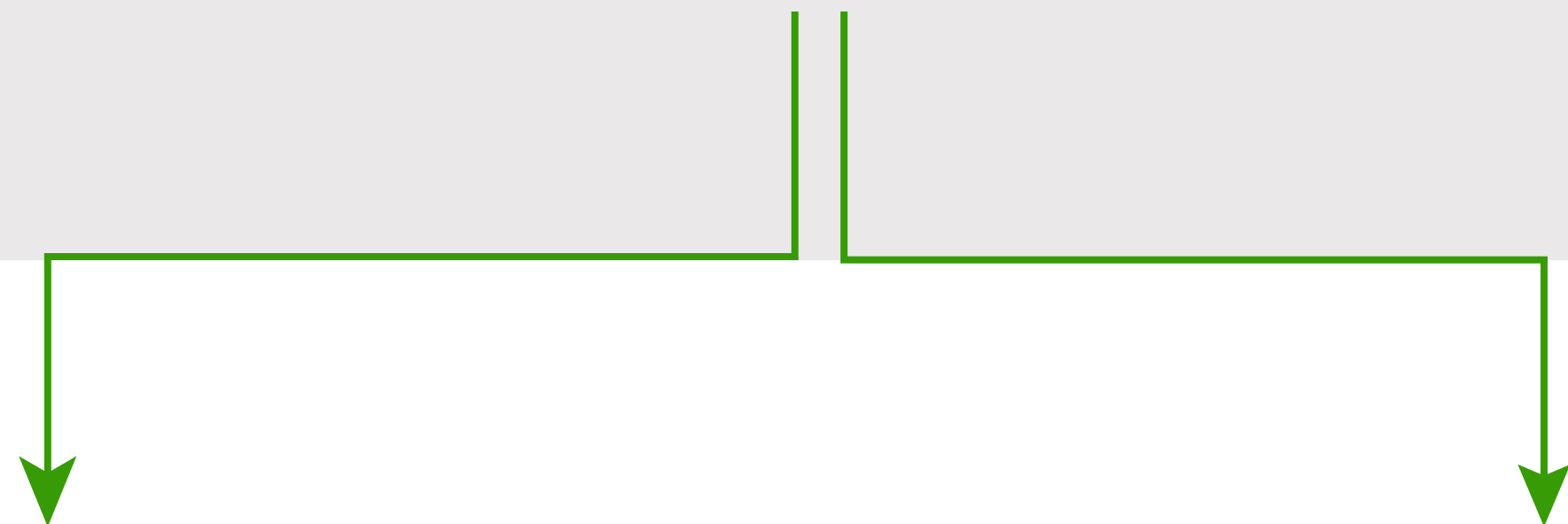
Industrial Computers



are resistant to temperature, dust, humidity and vibrations and are designed to operate 24/7 with full performance.

**HOW TO CHOOSE
INDUSTRIAL PANEL COMPUTERS,
AND WHAT FEATURES SHOULD BE CONSIDERED?**

PROCESSOR



Windows[®] Based

Android[®] Based

Intel[®] — Celeron[®]
Pentium[®]
iCore[®]

ARM[®] — Cortex[®]

TEMPERATURE RESISTANCE

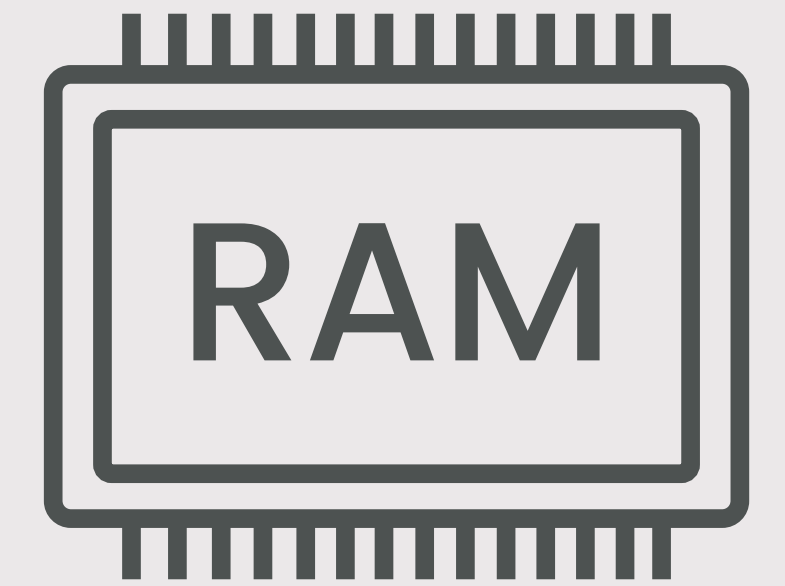


°C

60°C
Temperature
Resistant



Industrial
Grade SSD
Resistant to
70°C of
Temperature



Industrial
Grade
RAM
Resistant to
80°C of
Temperature

LIQUID PROTECTION



IP 65 STANDARD

It is dustproof and protects low-pressure water from all directions.

LIQUID PROTECTION

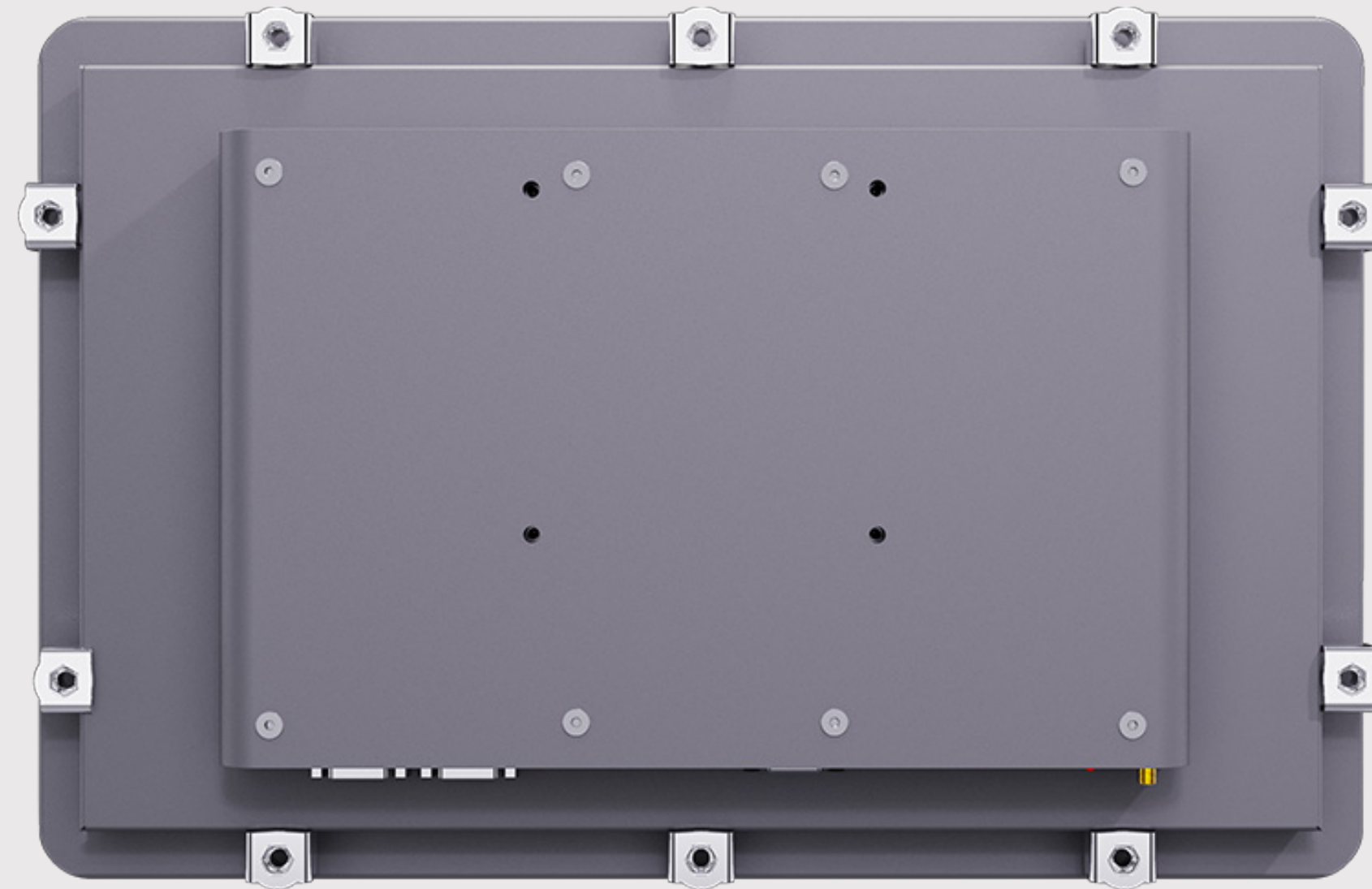


IP **66** STANDARD

It is dustproof and protects high-pressure water that can come from all directions.

! *IP66 standard is preferred in medical, construction and food production facilities.*

DUST PROTECTION



Fanless



Fully Closed



Dust Proof

Industrial Grade Stainless Steel

ERGONOMICS

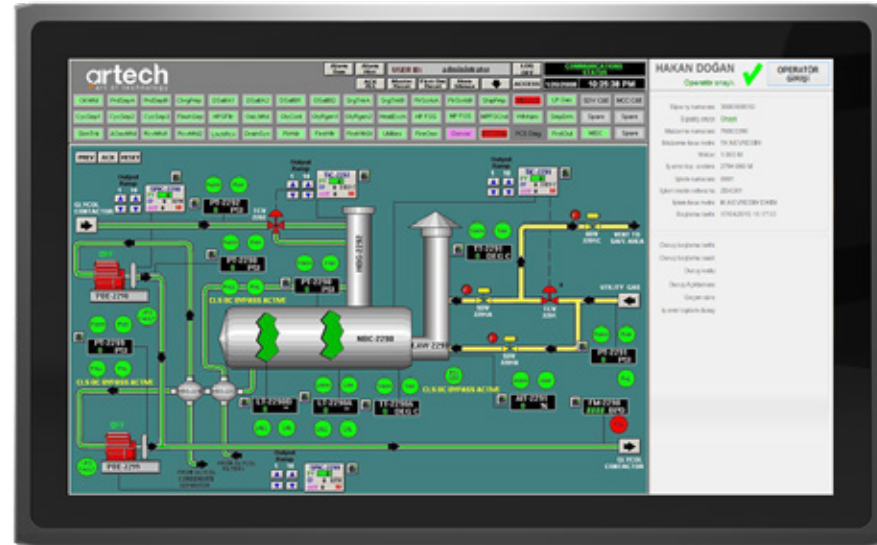
SCREEN SIZE



10" / 15" / 17" / 21"
TFT Screen Model Options

ERGONOMICS

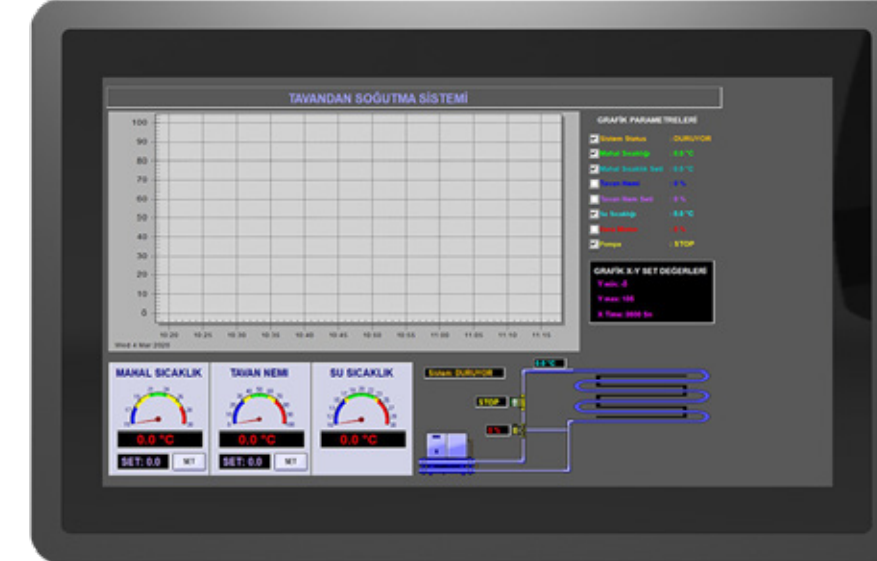
TOUCH SCREEN



**Resistive
Flat-Touch**



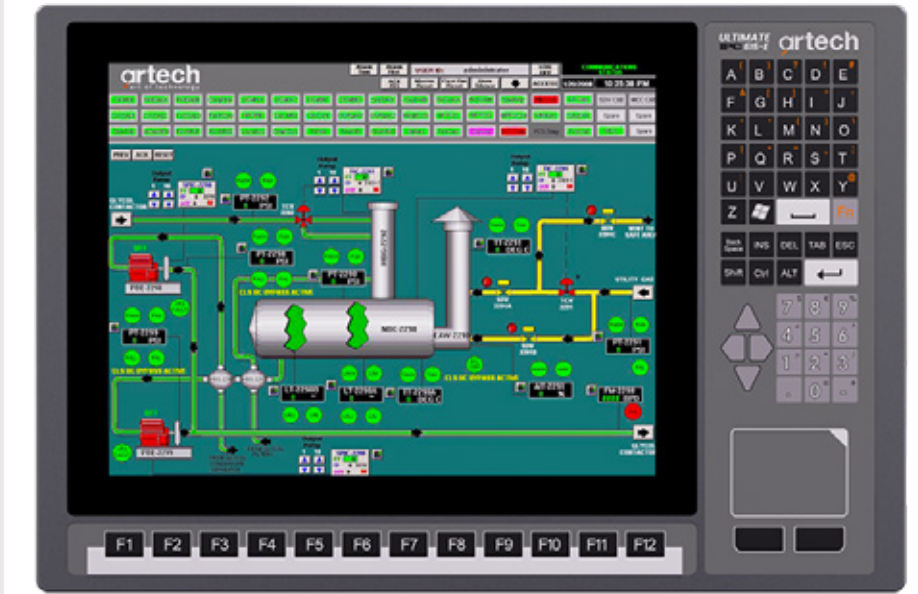
Requires
pressure
on the
touchscreen.



**Capacitive
Multi-Touch**



It does not
require pressure
on the touch screen
and can sense
the object's proximity.



**Industrial
Membrane
Keypad
&
Touchpad**

ERGONOMICS

TOUCH
SCREEN

3mm. Thickened, Impact-Reinforced



**Resistive and Capacitive
Flat-Touch Technology**

**FAST
RESPONSE**

FAST RESPONSE
TO FAILURE WITH NO LOSS OF COST



Only 15 seconds
with **ARTECH™** Technology!

SUITABLE MOUNTING FOR YOUR WORKING ENVIRONMENT

MOUNTING



Compliance with Panel and Vesa Mounting

AFTER SALES SERVICES



Up to 3 years warranty



Up to 5 years spare parts supply warranty

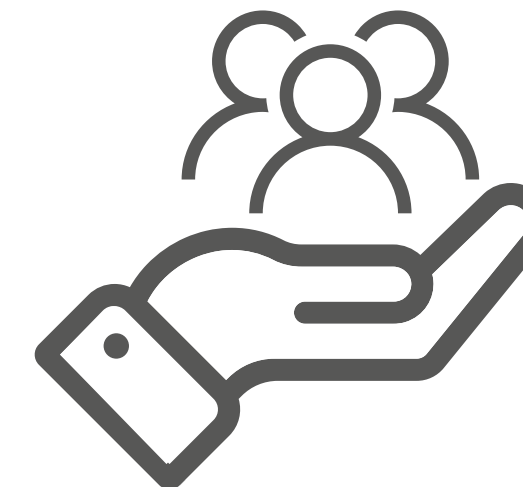
Our After-Sales Services offer the following services to our customers:

Field
Reconnaissance

Spare Parts

Device Assembly
and Installation

Maintenance
and Repair





ÇİZGİ TEKNOLOJİ



Scan the QR code for our references.

info@cizgi.net

+90 216 365 82 50



www.cizgi.net
www.artech-ipc.com.tr



Çizgi Teknoloji Elektronik Tasarım
ve Üretim A.Ş.



Cizgi Technology
Artech-Art of Technology