



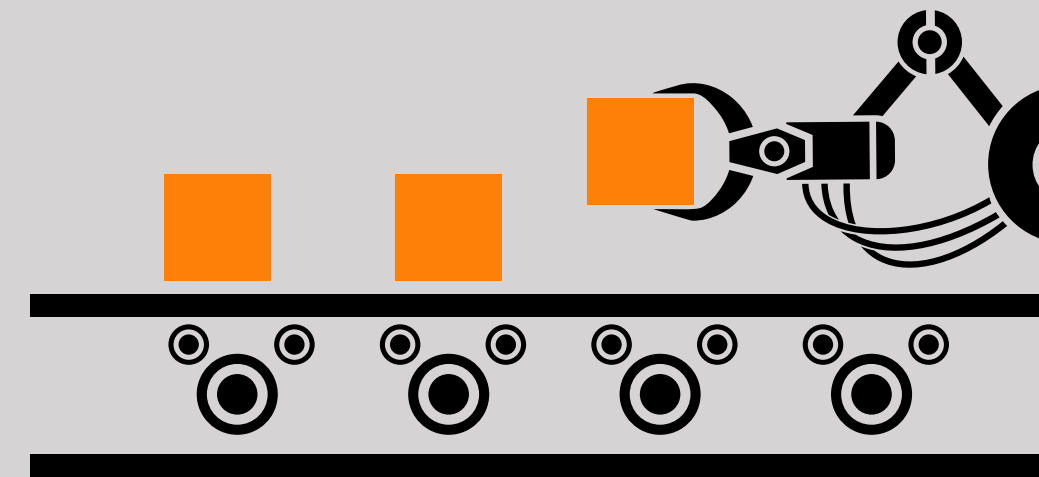
ÇİZGİ TEKNOLOJİ

“We Shape Tomorrow's Industries with **Innovative Computing Solutions**”

We Shape Tomorrow's Industries with Innovative Computing Solutions

- We offer industrial computer solutions to increase production efficiency, reduce costs and optimise energy use in automotive, white goods, textile and many other industries.
- We aim to design and manufacture reliable hardware by offering the most appropriate and practical solutions in critical areas, thus maximising your operating efficiency.
- We support the digital transformation of your business by adopting Industry 4.0 and digitalisation concepts.
- Our customised solutions make your business processes more efficient, sustainable, and competitive. With our innovation and quality-oriented approach, we respond to the production needs of the future today.

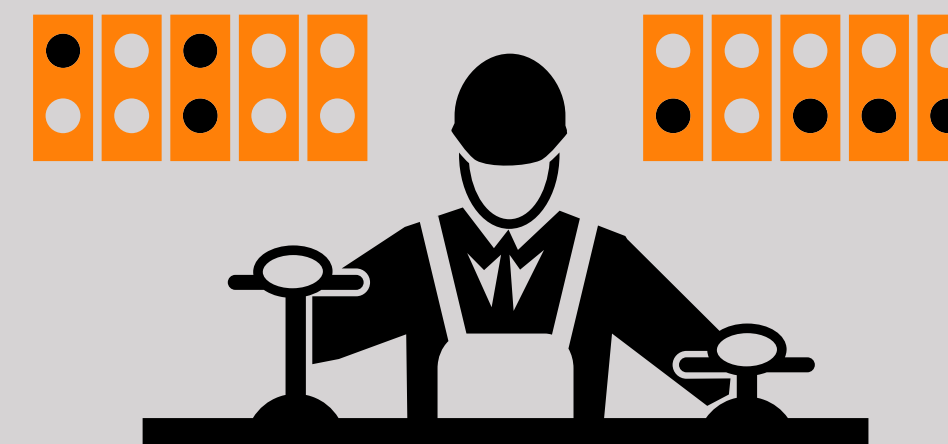
Production Data Collection



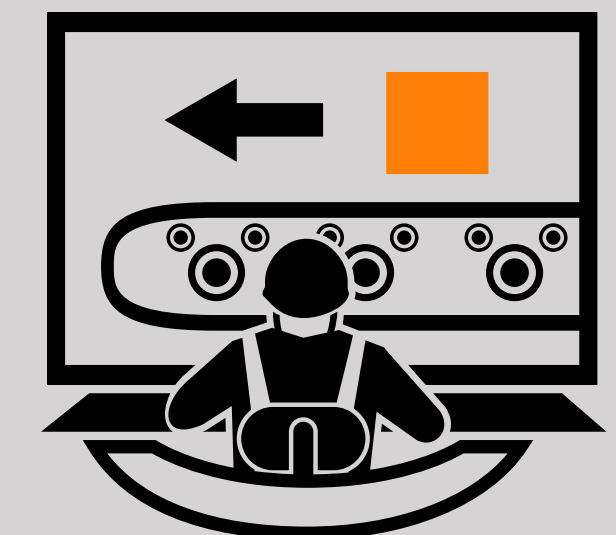
Process Analysis and Control



Machine and Process Automation



Operator Panel



Why ARTECH Industrial Computer Solutions?



Innovative and competitive products



Robust and durable design



Extended warranty period



Sustainable spare parts supply



Smooth operation performance



Fast and professional technical services

We experience the privilege of offering extraordinary and sustainable products with our experience in industrial system technologies for more than a quarter of a century and our production ability that we are proud of.

INDUSTRIAL PANEL COMPUTERS

INDUSTRIAL PANEL COMPUTER PRODUCT GROUP

ARTECH industrial panel computers are the solutions we offer to increase your facility's efficiency and reduce cost and energy use. They resist heavy industrial conditions, are trouble-free performers, and are supported by competent and fast technical service.



For detailed information about
ARTECH Industrial Panel Computers, scan the QR code.



PERFORMANCE SERIES



ULTIMATE SERIES



VERSATILE SERIES



STAINLESS SERIES

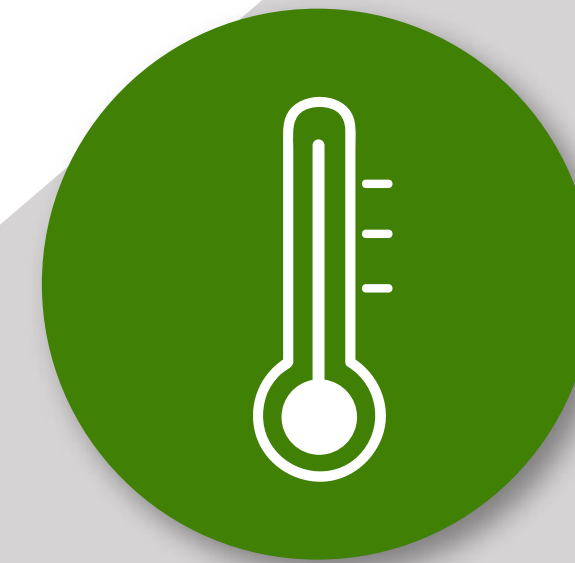
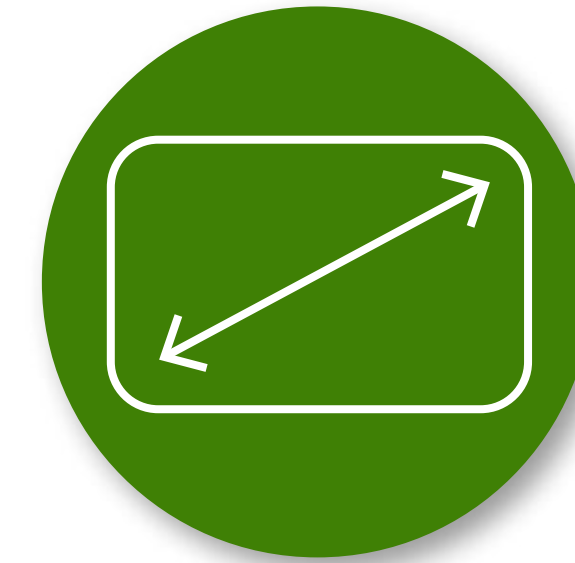


WATERPROOF SERIES

INDUSTRIAL PANEL COMPUTER

GENERAL FEATURES

- Wide Range of Products That Can Provide Solutions for All Kinds of Applications and Environmental Conditions
- 3 Years Standard and 5 Years Spare Parts Supply Warranty
- Windows and Android Solutions
- Celeron / Pentium / iCore Level Solutions
- Wifi Option (5Ghz Technology with B/G/N/AC Support)
- 4:3 and 16:9 Screen Ratio Options
- IP65 Front Face Protection and IP66 Protection
- Wide Viewing Angle and Different Touchscreen Technologies
- Industrial Grade SSD Suitable for 0-70°C Operating Temperature
- Industrial Grade RAM Suitable for 0-80°C Operating Temperature



PERFORMANCE SERIES

- High Performance Fanless Pentium N4200 or Celeron J6412 Processor
- 10.1" / 15.6" / 21" Screen Options
- Capacitive Multi-Flat Touch Technology
- 16:9 Widescreen
- IP65 Front Panel Protection
- 0-60°C Working Performance
- Thin, Fanless, Fully Enclosed, Dust Protected Industrial Type Metal Body
- Suitable for 24/7 Operation, Durable and Long-Lasting

Improve Efficiency and Agility,
Challenge Competition



Improve Efficiency and Agility,
Challenge Competition

PERFORMANCE SERIES

If the Conditions are Extreme, The Solution is
artech Industrial Panel Computer



ULTIMATE SERIES

- Fanless iCore Next Generation Processor Feature
- 15" / 17" / 21" Screen Options
- 3 mm. Reinforced Against Impacts, Resistive and Capacitive Flat Touch Technology Options
- IP65 Front Panel Protection
- Easy Removable and Replaceable Disc Slot
- Multi-Purpose Expansion Slot (PClex, IO, Additional USB – Serial Port etc.)
- 24VDC Supply
- 0-60°C Working Performance
- Fanless, Fully Enclosed, Dust Protected Industrial Type Stainless Steel Metal Body
- Suitable for 24/7 Operation, Durable and Long-Lasting



At the Peak of
Performance and Durability

At the Peak of
Performance and Durability

ULTIMATE SERIES



If the Conditions are Extreme, The Solution is
artech Industrial Panel Computer



VERSATILE SERIES

- High-Performance Fanless Pentium N4200 Processor
- 15.6" / 21" Screen Options
- Capacitive, True Flat Multi-Touch Technology
- 0-60°C Working Performance
- Fully Enclosed, Dust Protected Industrial Type Metal Body
- Suitable for 24/7 Operation, Durable and Long-Lasting
- Easy to Apply, QR Code - Barcode - RFID Reader, Wifi and Mounting Accessories

Outstanding success,
adaptable to all conditions

That's what my game is built around: versatility. (Karl Anthony Towns)

Outstanding success,
adaptable to all conditions

VERSATILE SERIES



If the Conditions are Extreme, The Solution is
artech Industrial Panel Computer



STAINLESS SERIES

- Fanless Celeron Processor
- 10" / 15" / 17" / 21" Screen Options
- Capacitive and Resistive Flat Touch Screen Technology
- IP65 Front Panel Protection
- Easy Removable and Replaceable Disc Slot (Optional)
- Multi-Purpose Expansion Slot (PClex, IO, Additional USB – Serial Port etc.)
- 220VAC and 24VDC Options
- 0-60°C Working Performance
- Suitable for 24/7 Operation, Durable and Long-Lasting

When hardness meet's resistance

When hardness meet's resistance

STAINLESS SERIES



If the Conditions are Extreme, The Solution is
artech Industrial Panel Computer
art of technology



WATERPROOF SERIES

- High-Performance Fanless Pentium N4200 Processor
- Industrial Stainless Steel Body
- Washable
- IP66 Class Full Enclosed Protection
- 0-60°C Working Performance
- Price / Performance Product

Fear No Leakage

If the Conditions are Extreme, The Solution is
artech Industrial Panel Computer

**Fear
No Leakage
WATERPROOF SERIES**



INDUSTRIAL BAREBONE COMPUTERS

INDUSTRIAL BAREBONE COMPUTER PRODUCT GROUP

Artech Industrial Barebone Computers are our solution developed for the operation of your facility with its resistance to industrial conditions, trouble-free working performance, and competent and fast technical service.



For detailed information about
Artech Industrial Barebone Computers, scan the QR code.



BPC-600 SERIES



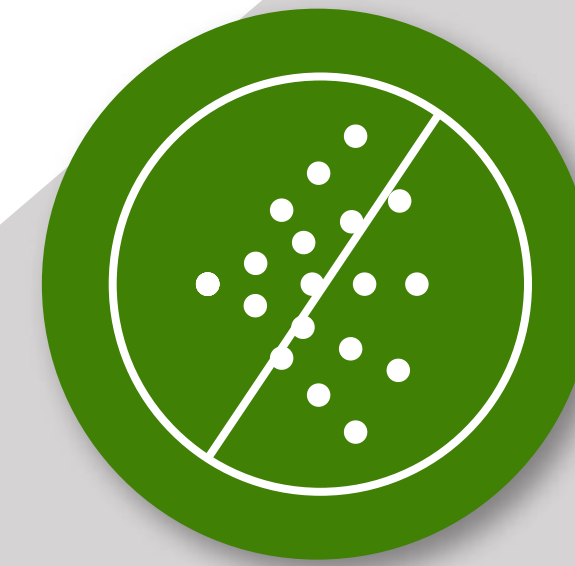
BPC-700 SERIES



BPC-400 AND SERIES

INDUSTRIAL BAREBONE COMPUTER GENERAL FEATURES

- Suitable for Use in Industrial Environments
- High Quality
- 3 Years Standard and 5 Years Spare Parts Supply Warranty
- Compact Design
- Power Supply Filter
- Fanless Cooling
- Industrial Dust-Protected Metal Case
- Special Locking Slot (OPS) for Easy Hard Disc Replacement



BPC-600/700 BPC-410 AND SERIES

Artech Barebone PCs are industrial computers produced from high-quality parts used in production environments with their integrated designs and robust structures.

- Compact / Robust Design
- Industrial Grade SSD Suitable for 0-70°C Operating Temperature
- Industrial Grade RAM Suitable for 0-80°C Operating Temperature
- Power Supply Filter
- Industrial Dust Proof Aluminium and Stainless Steel
- Fanless Cooling
- Special Locking Slot for Easy Hard Disc Replacement



EASY REMOVABLE AND
REPLACEABLE DISC SLOT

INDUSTRIAL MONITORS

INDUSTRIAL MONITOR PRODUCT GROUP

Artech Industrial Monitor is our industrial-grade LCD solution for digital information and corporate communication applications.



For detailed information about
ARTECH Industrial Monitors, scan the QR code.



M-716 SERIES



M-415E SERIES

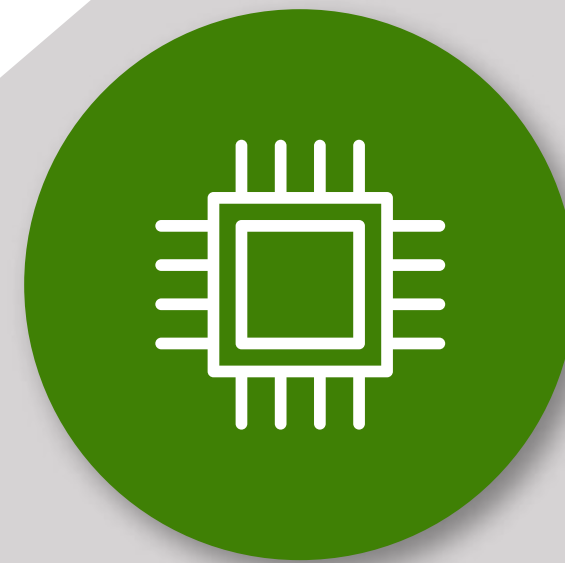


M-415 SERIES

INDUSTRIAL MONITOR

GENERAL FEATURES

- Robust and Durable Design
- Suitable for Industrial Working Environments
- Touch Screen Options
- Industrial Stainless Steel Body
- IP65 Front Panel Protection
- Power Supply Filter
- 3 Years Standard and 5 Years Spare Parts Supply Warranty

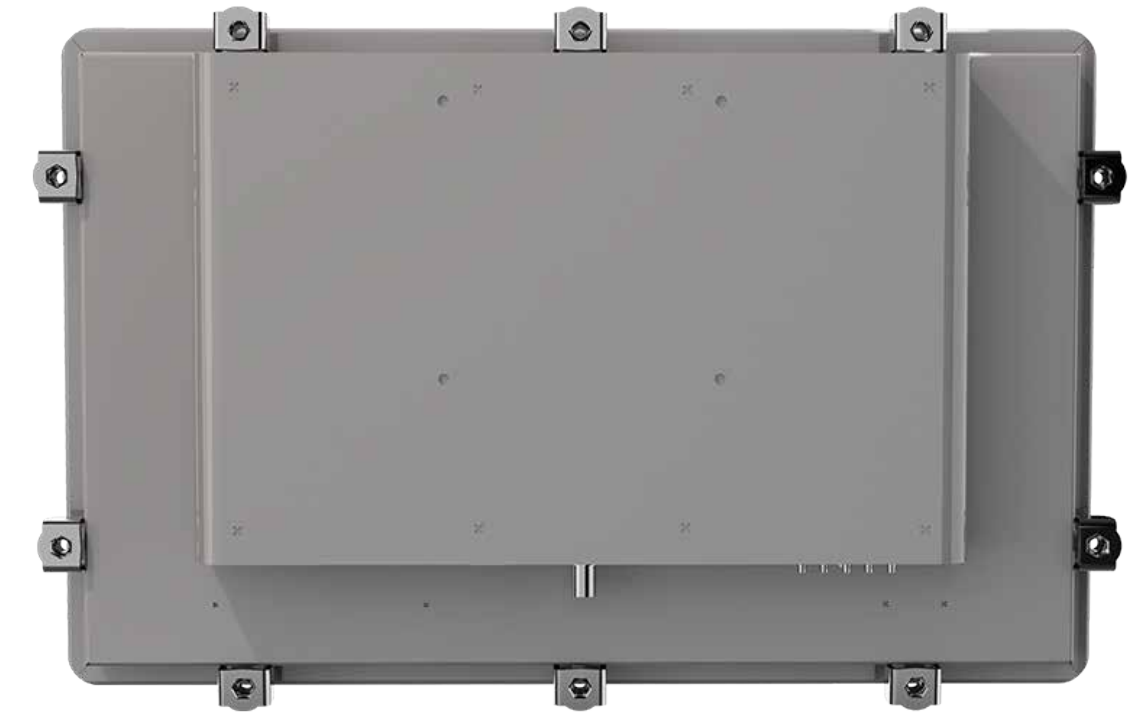


M-415E / M-415 M-716 SERIES

Our industrial monitors are designed to deliver superior performance in harsh industrial conditions.

These industrial-grade compact LCD display solutions are equipped with touchscreen options and combine reliability and impressive performance.

- 15" / 16" Screen Options
- Built-in Industrial Keyboard and Touchpad Option (M-415E)
- IP65 Front Panel Protection
- Industrial Stainless Steel Body
- Power Supply Filter
- Suitable for 24/7 Operation, Durable and Long Lasting





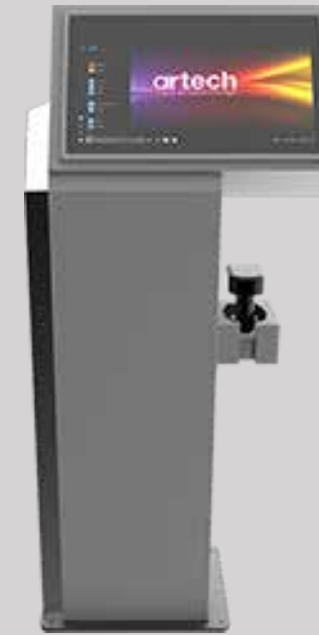
INDUSTRIAL KIOSKS

INDUSTRIAL KIOSK PRODUCT GROUP

Artech Industrial Kiosk is our solution that can be integrated into various industrial areas, such as production facilities, with its touch screen that stands out with its one-piece design. It offers a high level of performance and durability, contributing to the smooth management of your industry.



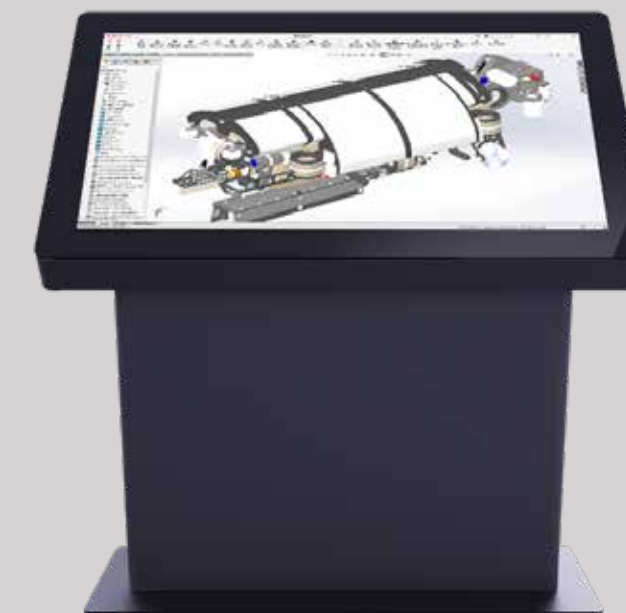
For detailed information about
ARTECH Industrial Kiosks, scan the QR code.



K TYPE KIOSK
CABIN SERIES



KE TYPE KIOSK
CABIN SERIES



TM-349 SERIES

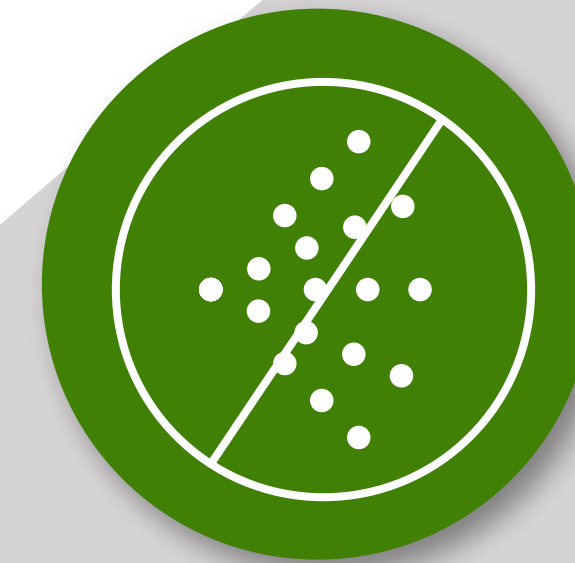
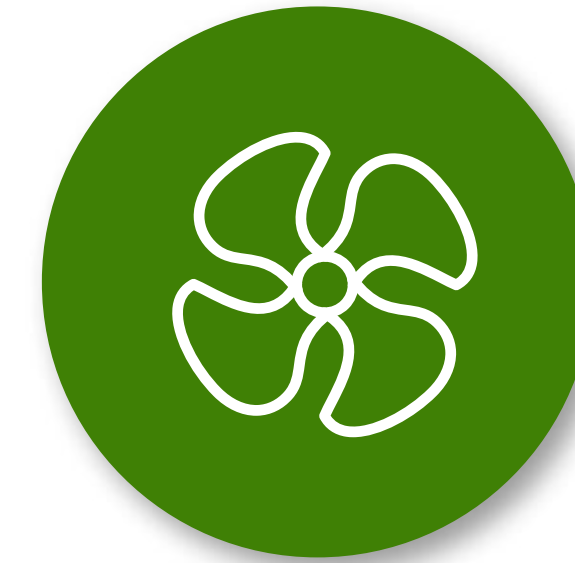


TM-355 SERIES

INDUSTRIAL KIOSK

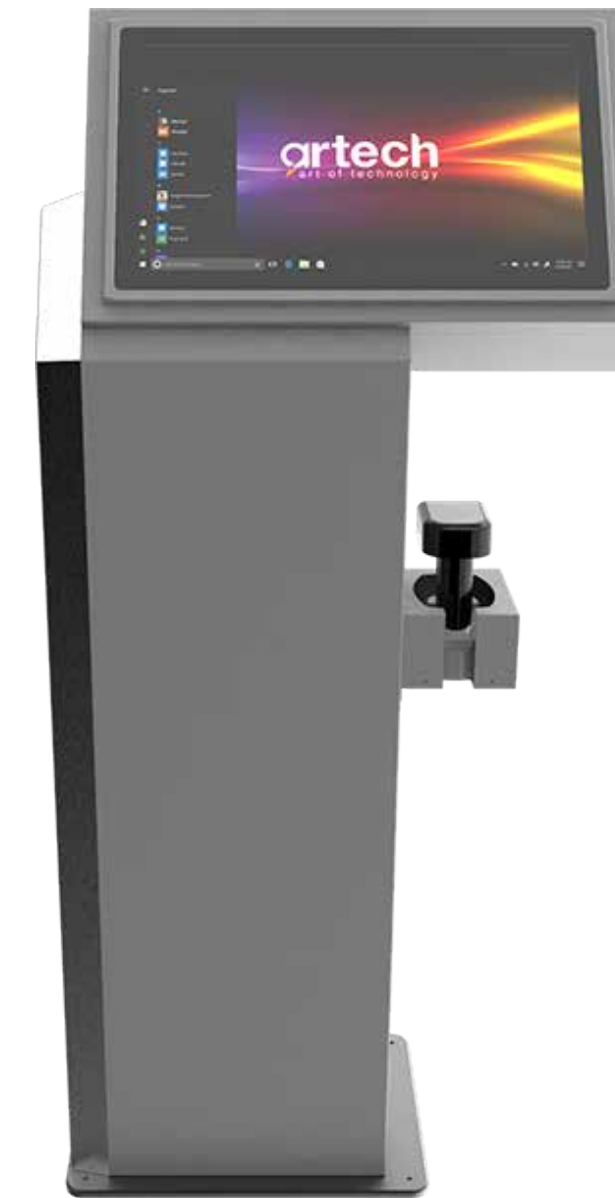
GENERAL FEATURES

- Customisable Colour Options Suitable for Your Corporate Identity and Logo
- Industrial Dust and Corrosion-Resistant Metal Case
- Impact and Vibration-Resistant Special Touchscreen
- IP65 Front Panel Protection
- Filtered Fan System
- USB Port Output
- Suitable for 24/7 Operation, Durable and Long Lasting



KIOSK CABIN SERIES

- 15" / 17" / 21" Screen Size Options
- Robust Metal Case with Industrial Dust Protection That Is Not Affected by Negative Factors Such As Moisture, Heat, Vibration
- Barcode Reader Carrying Slot
- Label Printer Compartment (KE Series)
- Industrial Stainless Keyboard and Trackball Series (KE Series)
- 3-Lid Design (KE Series)
- Ergonomic Design for Easy Access Inside the Kiosk
- Filtered Fan System / USB Port Output
- Customisable Colour Options Suitable for Your Corporate Identity and Logo



K Type
Kiosk Cabin
Series



KE Type
Kiosk Cabin
Series



DESIGN KIOSK

Design Kiosk is our solution for various applications from your factories to your production sites. It is an ideal option for viewing CAD/CAM projects and drawings with multi-touch and LCD technology.

- Suitable for Use in CAD/CAM Applications
- Performance Processor
- 49" / 55" Screen Options
- Horizontal Touchscreen Solution
- Ergonomic, Durable Designs Suitable for Production Environments
- Customisable Colour Options to Match Your Corporate Colour and Logo



INDUSTRIAL ANDON DISPLAYS

INDUSTRIAL ANDON DISPLAYS PRODUCT GROUP

Artech Andon Displays can be easily placed inside the facility and in the production area, enable to display various data obtained from the production process, OEE values, planned and actual production quantities, machine status and similar critical information on line or hall basis.

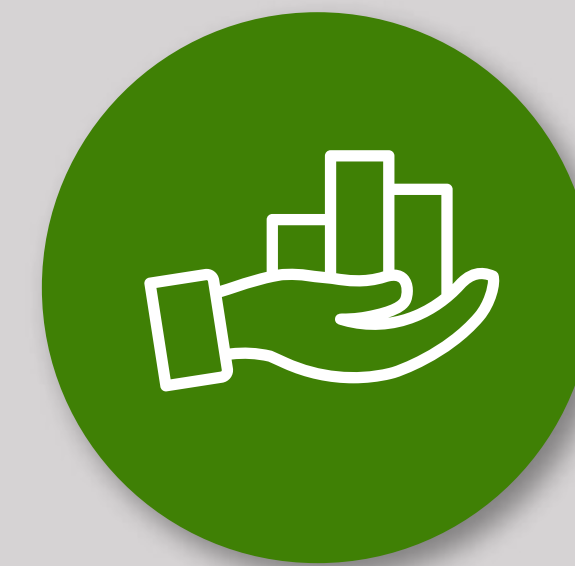
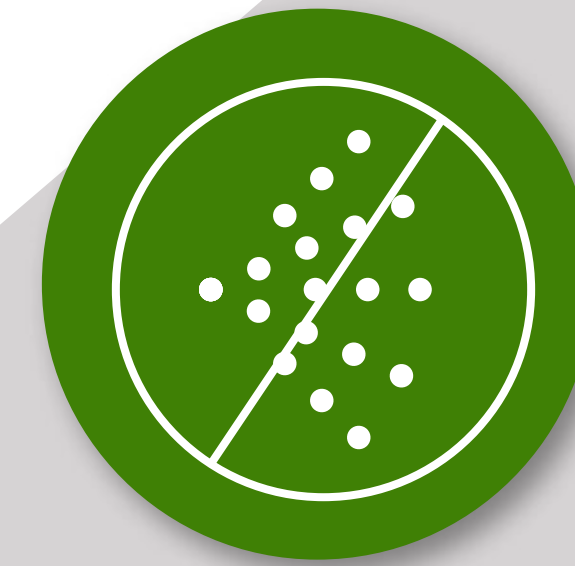


For detailed information about
Artech Industrial Andon Displays, scan the QR code.



INDUSTRIAL ANDON DISPLAY GENERAL FEATURES

- Smooth Running Performance
- Impact Resistant and Designed for Long-Term Use
- Robust Metal Case with Industrial Dust Protection
- Problem Analysis and Solution Support with Remote Connection
- Customisable Colour Options Suitable for Your Corporate Identity and Logo
- 2 Years Standard and 5 Years Spare Parts Supply Warranty



DPC-300/ 300 AND SERIES

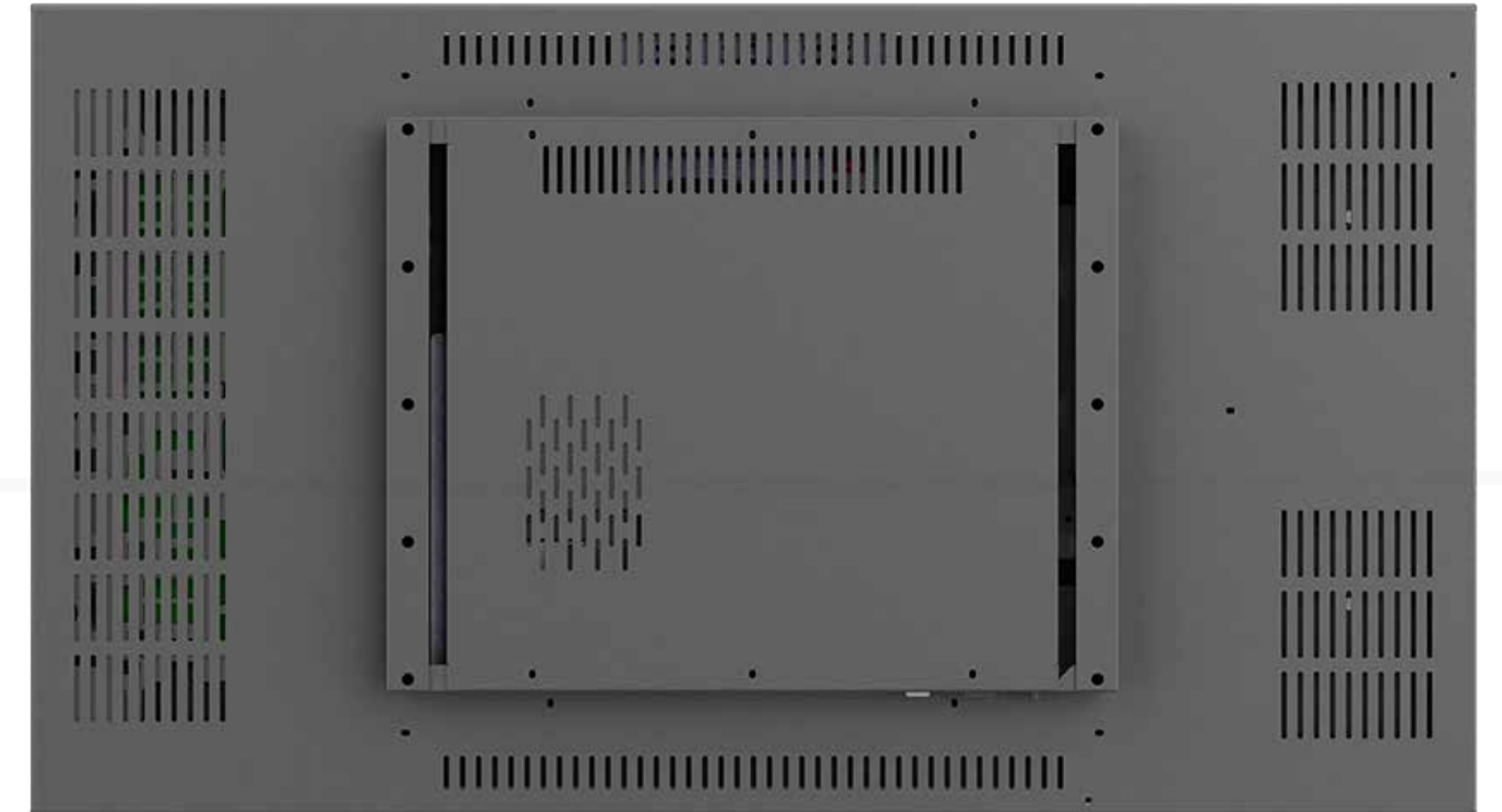
- 27" / 32" / 43" / 49" / 55" / 65" Screen Size Options
- Monitor, Android or Windows Operating System Options
- High-Level Breakage Protection with a 4 mm. Thick Tempered Glass Screen
- Durable Design Suitable for Industrial Working Environments
- SOC Technology
- Suitable for Use in the Horizontal and Vertical Orientation
- Wide Viewing Angle and Contrast
- Impact Resistant and Designed for Long-Term Use
- Hanger Bracket Options with Different Mounting Styles



VIDEOWALL SERIES

Videowall allows multiple screens to form a large and impressive screen of the desired size. It offers customisable communication solutions in factories, production facilities and various other areas with high resolution and superior image quality. Providing the most appropriate and effective communication for your needs is an excellent option.

- 49" / 55" Screen Options
- High-Resolution Image in the Desired Matrix
- Image Presentation at the Unique Resolution of Each Screen, Preventing Loss of Clarity and Providing the Highest Quality Viewing Experience
- Suitable for Continuous Operation, Robust and Ideal for Long-Term Use
- Easy to Intervene Hanger System



PENDANT ARM SYSTEM

PENDANT ARM SYSTEM

Artech Pendant Arm; can be used in various applications from factories to workshops and production facilities. This arm, resistant to harsh industrial conditions, can move easily in the desired direction and has a load-carrying capacity of up to 15 kg.



For detailed information about
Artech Pendant Arm System, scan the QR code.



PENDANT ARM

PENDANT ARM SYSTEM

GENERAL FEATURES

- Industrial Piston Arm
- Suitable for Industrial Use, Stainless Body
- Pan-Tilt Feature
- Rotation on Its Axis
- Easy Assembly and Use





Certificates

- TS 13611 (2014) AUTHORIZED SERVICES – AUTHORIZED SERVICE PROVIDING ACCORDING TO THE RULES STANDARD FOR PROGRAMMABLE AUTOMATION SYSTEMS
- TS 13243 (2014) AUTHORIZED SERVICES – AUTHORIZED SERVICE PROVIDING THE COMPLIANCE WITH THE RULES STANDARD FOR LED-GRAPHIC-BASED VIDEO ANNOUNCEMENTS
- TS 13166 (2017) AUTHORIZED SERVICES – ORDER AND CALL SYSTEM (QUEUEMATIC) – AUTHORIZED SERVICE PROVIDING THE COMPLIANCE WITH THE RULES STANDARD
- TS 12498 (2015) AUTHORIZED SERVICES – COMPUTER AND ENVIRONMENTAL UNITS – AUTHORIZED SERVICE PROVIDING THE COMPLIANCE WITH THE RULES STANDARD
- TS 12963 (2016) AUTHORIZED SERVICES – POS, ATM, KIOSK AND HAND TERMINALS – AUTHORIZED SERVICE PROVIDING ACCORDING TO THE RULES STANDARD
- ISO 9001 (2015) DESIGN, PRODUCTION, AFTER-SALES SERVICES QUALITY MANAGEMENT SYSTEM CERTIFICATE
- ISO 13485 (2016) MEDICAL DIGITAL IMAGING AND INFORMATION SYSTEMS PRODUCTION AND TECHNICAL SERVICE SERVICES OF DEVICES QUALITY MANAGEMENT SYSTEM CERTIFICATE
- ISO 27001 (2013) INFORMATION SECURITY MANAGEMENT SYSTEM CERTIFICATE
- ISO 10002 (2018) CUSTOMER SATISFACTION AND ACTIVE INFORMATION MANAGEMENT SYSTEM CERTIFICATE
- ISO 45001 (2018) OCCUPATIONAL HEALTH AND SAFETY MANAGEMENT SYSTEM CERTIFICATE



ÇİZGİ TEKNOLOJİ



Scan the QR code for our references.

info@cizgi.net

+90 216 365 82 50



www.cizgi.net
www.artech-ipc.com.tr



Çizgi Teknoloji Elektronik Tasarım
ve Üretim A.Ş.



Cizgi Technology
Artech-Art of Technology